



# **BUSINESS INDICATORS**

**AUSTRALIAN  
CAPITAL  
TERRITORY**

EMBARGO: 11:30AM (CANBERRA TIME) MON 23 AUG 1999

## **C O N T E N T S**

	<i>page</i>
Notes .....	2
Summary of findings .....	3
Selected business indicators .....	5

### FEATURE ARTICLE

Stock of Human Resources in Science and Technology .....	6
--	---

### TABLES

<b>1</b> Business expectations: Sales, September quarter 1999/ June quarter 2000, expected aggregate change .....	9
<b>2</b> Business indicators .....	10
<b>3</b> ACT in relation to the rest of Australia .....	13
<b>4</b> ACT in relation to the rest of Australia—percentage change .....	14

- For more information about these and related unpublished statistics, contact Natalie Collins on Canberra 02 6207 0446 or Will Blythe on Canberra 02 6207 0311 or any ABS office shown on the back cover of this publication.

## NOTES

### FORTHCOMING ISSUES

<i>ISSUE</i>	<i>RELEASE DATE</i>
September 1999	20 September 1999
October 1999	19 October 1999
November 1999	23 November 1999
December 1999	21 December 1999
January 2000	25 January 2000
February 2000	22 February 2000

### SYMBOLS AND OTHER USAGES

ACT	Australian Capital Territory
n.a.	not available
no.	number
n.p.	not available for publication
p	preliminary
*	Represents data with a standard error of greater than 25%. Caution should be exercised when using this data.
—	nil or rounded to zero

Dalma Jacobs  
Regional Director, Australian Capital Territory

## SUMMARY OF FINDINGS

### UPDATED SERIES

Series updated since the July 1999 issue are: labour force, industrial disputes, retail trade, housing finance, building approvals, building commencements, engineering construction, motor vehicle registrations, gross earnings, consumer price index and wage and salary earners. The feature article on page 6 is on the Stock of Human Resources in Science and Technology in the ACT.

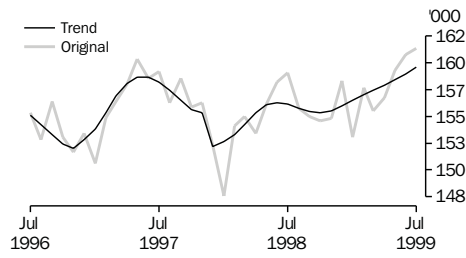
### NOTABLE MOVEMENTS

Labour force	In July 1999, the trend unemployment rate for the ACT decreased 0.1 percentage points from the previous month to 5.7%, and decreased 1.1 percentage points compared to July 1998. Compared to the previous month trend employment increased by 0.4% (to 159,300 persons). Nationally, trend employment increased by 0.2% from the previous month and the trend unemployment rate remained steady at 7.2%. The trend participation rate in the ACT increased by 0.1 percentage points to 71.3% compared to the previous month, while nationally the trend participation rate remained steady at 63.0%.
Industrial disputes	For the 12 months ended April 1999 there were 34 working days lost per thousand employees in the ACT compared to 72 days nationally. In comparison with the 12 months ended April 1998, there was an increase of 126.7% for the ACT and a decrease of 2.7% nationally in the number of working days lost per thousand employees.
Retail turnover	The trend estimate for retail turnover in the ACT for June 1999 was \$233.4 million, an increase of 0.2% from the previous month and was up 6.2% compared to June 1998. The national trend retail turnover recorded an increase of 0.2% from the previous month and was up 6.9% compared to the previous year.
Housing finance	The trend number of dwelling units financed (including refinancing) in the ACT in June 1999 was 842, an increase of 1.2% from the previous month. The trend estimate for the value of commitments in the ACT remained steady at \$108 million, compared to the previous month. Refinancing of existing dwellings comprised 13.1% of the total value of dwelling units financed in June 1999, a decrease from 17.6% in the previous month. Nationally, the trend number of dwelling units financed (including refinancing) during June 1999 was 45,502, an increase of 1.8% from the previous month, while the trend estimate for the value of commitments increased to \$5,919 million (up 2.0%) from the previous month.
Building approvals	The trend number of dwelling units approved in the ACT decreased by 5.5% to 154 dwelling units in June 1999. Nationally, the trend number of dwelling units approved increased by 0.8% to 13,134 dwelling units in June 1999.

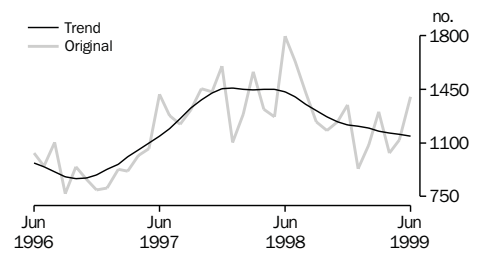
Building approvals <i>continued</i>	The value of non-residential building approvals in the ACT was \$2.5 million in June 1999, a decrease of \$23.6 million (down 90.4%) from the previous month. There has also been a decrease of \$13.8 million (down 84.7%) compared to June 1998. Nationally, the value of non-residential building approvals decreased by 2.6% from the previous month and was down 22.6% from June 1998.
Building commencements	The value of new houses commenced in the ACT in the March quarter 1999 was \$38.6 million, up 8.7% from the previous quarter and 33.6% from the March quarter 1998. Nationally, the value of new houses commenced in the March quarter 1999 recorded a 10.2% decrease from the previous quarter and a 16.6% increase on a year ago.
Engineering construction	The value of construction work done by the public sector in the ACT during the March quarter 1999 increased by 38.0% or \$8.1 million from the previous quarter, and increased \$6.3 million or 27.3% from the March quarter 1998. Nationally, the value of public sector work done increased 0.5% from the previous quarter, and increased 9.3% from the March quarter 1998.  The value of engineering construction work done by the private sector in the ACT during the March quarter 1999 decreased by 22.8% to \$11.5 million from the previous quarter, and decreased 45.0% or \$9.4 million from the March quarter 1998. Nationally, the value of private sector engineering construction work done was down 10.9% from the previous quarter, and down 7.2% from the March quarter 1998.
Motor vehicle registrations	The trend estimate for ACT new motor vehicle registrations in June 1999 was 1,143, down 1.0% from the previous month, and down 20.2% compared to June 1998. Nationally, the trend for total new motor vehicle registrations in June 1999 remained steady compared to May 1999, but down 4.3% compared to June 1998.
Gross earnings	Gross earnings in the ACT for the public sector for the March quarter were \$876.0 million, an increase of 11.4% on the previous figure, and up 13.9% compared to the corresponding quarter 1998. From the previous quarter, private sector gross earnings were down 1.4% to \$578.9 million, but up 35.9% from the March quarter 1998. Nationally, public sector earnings were down 2.7% from the previous quarter, while private sector gross earnings also fell 4.0%.
Consumer price index	The ACT experienced a small increase of 0.1% in the All Groups CPI for the June quarter 1999. This compares with the national figure of a 0.4% increase. The ACT annual CPI rate to June quarter 1999 recorded an increase of 0.2%, while the annual CPI for the weighted average of the eight capital cities increased 1.1%.
Wage and salary earners	The trend number of wage and salary earners from the public and private sectors in the ACT grew 2.4% (or 3,400 persons) to 144,700 in the period November 1998 to February 1999. This compares to a national increase of 1.3% (or 96,400 persons). The proportion of private sector wage and salary earners in the ACT sits at around 55%. These figures exclude self-employed persons in jobs located in the private sector.

# SELECTED BUSINESS INDICATORS

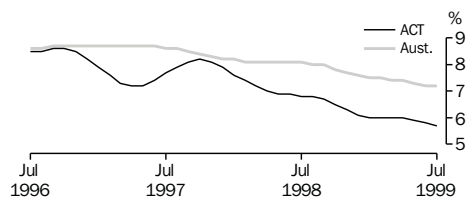
LABOUR FORCE, Employment



NEW MOTOR VEHICLE REGISTRATIONS

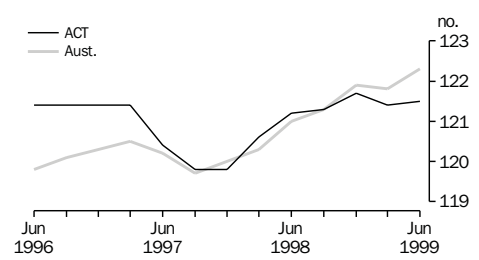


LABOUR FORCE, Unemployment Rate: Trend

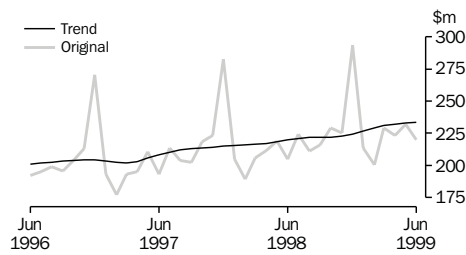


Note: Trend estimates for October 1998 to March 1999 have been revised.

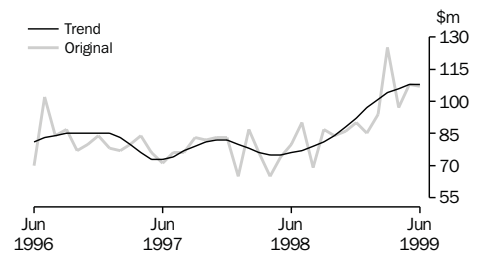
CONSUMER PRICE INDEX



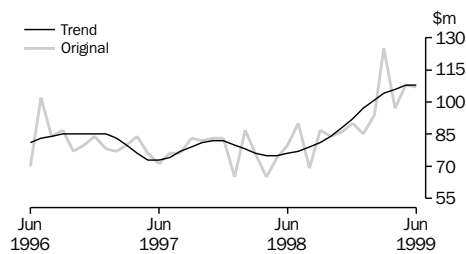
RETAIL TURNOVER



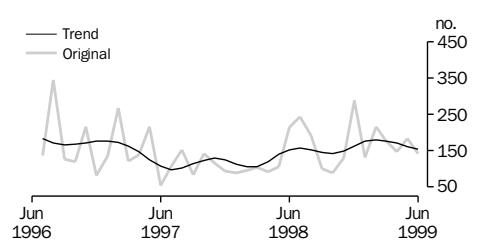
HOUSING FINANCE



HOUSING FINANCE



BUILDING APPROVAL—DWELLING UNITS APPROVED



Note: For the period July to December 1996, 165 dwelling units and total building work of \$40.5 million (16%) had been incorrectly omitted from data reported to ABS. All series for the ACT have been revised from July 1996 and a trend break has been included in the graph.

## FEATURE ARTICLE

## STOCK OF HUMAN RESOURCES IN SCIENCE AND TECHNOLOGY

### NUMBER OF PERSONS IN SCIENCE AND TECHNOLOGY

Human Resources in Science and Technology (HRST) as a proportion of the population aged 15 and over in the ACT increased from 29% in 1991 to 34% in 1996. Nationally, the corresponding population increased from 15% in 1991 to 18% in 1996. HRST is the number of people working in Science and Technology (S&T) occupations or with S&T qualifications.

In the ACT between 1991 and 1996, HRST defined in terms of qualifications increased from 23% of the population aged 15 and over to 26%, while HRST defined in terms of occupations increased from 19% of the population aged 15 and over to 22%. Between 1991 and 1996 the largest increase was in people with S&T qualifications employed in S&T occupations (35%). There was a 13% increase in both the number of people with S&T qualifications in non S&T occupations, and people without S&T qualifications in S&T occupations.

### PEOPLE WITH S&T QUALIFICATIONS

Age and sex People aged 35 to 44 accounted for 28% of people in the ACT with S&T qualifications in 1996, while those aged 25 to 34 made up 26%, and 23% were aged 45 to 54.

Males in the ACT accounted for 51% of all people with S&T qualifications, however nationally there was a higher proportion of females (54%) with S&T qualifications.

Field and level of study In the ACT the most common fields of study for people with S&T qualifications were society and culture, and natural and physical sciences. Within each field architecture and building had the highest proportion of people over 55 years (29%), followed by health (20%). Natural and physical sciences had the lowest (10%). Business and administration (41%) and natural and physical sciences (40%) had the highest proportion of 15 to 34 year olds. Education had the lowest proportion of 15 to 34 year olds (22%).

Of people with S&T qualifications in the ACT, 52% had bachelor degrees, 14% higher degrees and 12% associate diplomas.

Labour force status The unemployment rate for all people with S&T qualifications was 3.3%. For people with S&T qualifications in the ACT, those with the field of study health had the lowest unemployment rate (1.9%). The highest unemployment rate was for people with qualifications in architecture and building (5.5%).

The participation rate for all people with S&T qualifications was 83.7%. People with qualifications in the field of business and administration had the highest participation rate (87.4%). The lowest participation rate was for people with qualifications in agriculture and related fields (75.6%).

Industry In the ACT the industries with the largest number of people with S&T qualifications were government administration and defence (18,200), education (8,800) and health and community services (5,400). These industries also had the highest proportion of people with S&T qualifications (47%, 66% and 46% respectively). The industries with the lowest proportion of people with S&T qualifications were; construction (7%), retail trade (8%) and communication services (11%).

Of all industries, the government administration and defence, and education industries had the highest number of higher degrees (2,900 and 2,100 respectively); and postgraduate diplomas (2,500 and 1,500 respectively).

## PEOPLE IN S&T OCCUPATIONS

Age and sex In 1996 in the ACT, 32% of people employed in S&T occupations were aged 35 to 44, 26% were aged 25 to 34, and a further 26% were aged 45 to 54. In total, males accounted for 56% of people employed in S&T occupations. Of health professionals only 25% were male, while 92% of building and engineering professionals were male.

Industry In the ACT the industries with the largest numbers of people in S&T occupations were government administration and defence (20,113), education (9,250) and health and community services (5,394).

The industries with the highest proportion of persons in S&T occupations were; education (69%), government administration and defence (51%) and property and business services (46%). The industries with the lowest proportion of people in S&T occupations were; retail trade (5%), construction (6%) and accommodation, cafes and restaurants (6%).

Average annual income The average annual income earned by people in the ACT in S&T occupations in 1996 was \$49,000 (\$44,000 nationally). If those people also had S&T qualifications they were paid more (\$52,000) than those without such qualifications (\$41,000).

Regardless of occupation or qualification, males consistently earned more than females on average. Male health professionals with S&T qualifications earned the highest annual income (\$81,000), while female health and female building and engineering professionals with qualifications other than S&T earned the lowest (\$28,000).

AVERAGE ANNUAL INCOME OF PERSONS IN S&T OCCUPATIONS, ACT—1996

Qualification	People in S&T Occupations						All S&T occupations
	Specialist managers	Professionals					
		Natural and physicalscience	Building and engineering	Computing	Health	Other	
	\$'000	\$'000	\$'000	\$'000	\$'000	\$'000	\$'000
People with S&T qualifications							
Males	69	58	55	57	81	56	<b>61</b>
Females	58	40	36	46	37	39	<b>42</b>
Persons	65	52	54	55	48	47	<b>52</b>
Other qualifications							
Males	48	39	46	51	55	44	<b>47</b>
Females	40	30	28	40	28	31	<b>33</b>
Persons	45	37	45	48	33	37	<b>41</b>
All qualifications							
Males	60	56	53	55	78	52	<b>56</b>
Females	50	39	34	44	35	36	<b>39</b>
Persons	57	51	52	52	46	44	<b>49</b>

Source: Unpublished data, 1996 Census of Population and Housing.

For further information, please refer to *Human Resources in Science and Technology (HRST), Australia, 1996* (Cat. no. 8149.0).



# 1

## BUSINESS EXPECTATIONS: SALES

<i>Period</i>	<i>ACT</i>	<i>Aust.</i>
	%	%
<b>Short-term</b>		
Dec qtr 1997–Mar qtr 1998	-1.1	-0.3
Mar qtr 1998–Jun qtr 1998	-0.1	1.7
Jun qtr 1998–Sep qtr 1998	2.7	1.1
Sep qtr 1998–Dec qtr 1998	3.5	1.5
Dec qtr 1998–Mar qtr 1999	-2.7	-0.9
Mar qtr 1999–Jun qtr 1999	0.4	1.8
Jun qtr 1999–Sep qtr 1999	1.4	1.8
<b>Medium-term</b>		
Dec qtr 1997–Dec qtr 1998	2.9	3.0
Mar qtr 1998–Mar qtr 1999	2.6	2.6
Jun qtr 1998–Jun qtr 1999	6.9	2.7
Sep qtr 1998–Sep qtr 1999	7.5	2.8
Dec qtr 1998–Dec qtr 1999	2.6	2.7
Mar qtr 1999–Mar qtr 2000	1.7	2.3
Jun qtr 1999–Jun qtr 2000	5.7	3.3

Indicator	Unit	ACT			Aust.		
		% change from			% change from		
		Latest figure	Previous period	Same period previous year	Latest figure	Previous period	Same period previous year
<b>POPULATION, VITAL AND LABOUR</b>							
POPULATION, Dec qtr 98	'000	308.7	—	0.4	18 871.8	0.3	1.3
Natural increase	no.	752	2.3	-20.9	31 389	15.2	-1.5
Net migration	no.	-704	-44.6	54.5	27 429	-21.1	158.3
Total increase	no.	48	-80.6	150.0	58 818	-5.1	38.5
<b>LABOUR FORCE, Jul 99</b>							
Original Series							
Employed	'000	160.9	0.3	1.3	8 824.4	0.4	2.2
Unemployed	'000	8.7	4.8	-25.6	624.0	-3.8	-13.8
Unemployment rate	%	5.1	0.2	-1.8	6.6	-0.3	-1.1
Participation rate	%	71.5	0.3	-1.2	63.0	—	-0.4
Long-term unemployed, Jun 99	no.	2 626	-11.1	-10.7	191 582	-9.8	-14.6
Long-term unemployed as percentage of total unemployed		31.7	2.8	2.3	29.5	-1.3	-1.0
Trend series							
Employed	'000	159.3	0.4	2.0	8 771.1	0.2	1.8
Unemployed	'000	9.7	-2.0	-15.7	677.5	-1.0	-10.6
Unemployment rate	%	6.0	-0.1	-1.1	7.4	—	-0.9
Participation rate	%	71.3	0.1	-0.2	63.0	—	-0.4
<b>WAGE AND SALARY EARNERS</b>							
Number employed—trend series, Feb qtr 99							
Public sector	'000	65.8	-1.2	-5.2	1 447.0	0.3	-1.2
Private sector	'000	78.9	5.6	15.7	5 730.5	1.5	7.0
Total	'000	144.7	2.4	5.2	7 177.5	1.3	5.2
Gross earnings—original series, Mar qtr 99							
Public sector	\$m	876.0	-11.4	13.9	14 643.2	-2.7	5.2
Private sector	\$m	578.9	-1.4	35.9	45 014.1	-4.0	11.4
Total	\$m	1 454.9	5.9	21.7	59 657.3	-3.7	9.8
JOB VACANCIES, May qtr 99	'000	2.2	-4.3	57.1	71.1	6.8	-3.0
<b>INDUSTRIAL DISPUTES IN PROGRESS, Apr 99</b>							
Working days lost	'000	0.0	-100.0	—	28.0	-38.5	23.9
Days lost per '000 employees (year ended Apr 99)	no.	34.0	—	126.7	72.0	—	-2.7
<b>BUILDING AND CONSTRUCTION</b>							
<b>HOUSING FINANCE, May 99</b>							
Secured commitments to individuals for							
Original series							
Construction of dwellings	\$m	12.0	—	100.0	946.0	8.0	13.7
Purchase of new dwellings	\$m	3.0	50.0	—	259.0	10.2	1.2
Purchase of established dwellings	\$m	74.0	-1.3	34.5	5 050.0	4.2	24.1
Re-financing	\$m	14.0	-12.5	16.7	971.0	11.2	7.3
Total housing commitments	\$m	107.0	-0.9	33.8	6 255.0	5.0	21.2
Seasonally adjusted series							
Total housing commitments	\$m	107.0	-4.5	32.1	5 840.0	-1.8	19.9
Trend series							
Dwelling units financed	no.	842	1.2	24.6	45 502	1.8	14.1
Total housing commitments	\$m	108.0	—	42.1	5 919.0	2.0	29.0
<b>BUILDING APPROVALS, Jun 99</b>							
Original series							
Dwelling units	no.	142	-22.4	-34.0	14 154	3.8	-2.7
Value of new residential	\$m	17.0	-32.0	-27.7	1 631.3	1.1	7.8
Value of residential alterations and additions	\$m	2.9	-59.2	-39.6	251.2	0.2	-11.2
Value of non-residential	\$m	2.5	-90.4	-84.7	948.6	-2.6	-22.6
Value of total building	\$m	22.4	-61.5	-49.9	2 831.1	-0.2	-6.3
Trend series							
Dwelling units	no.	154	-5.5	0.7	13 134	0.8	-0.5

Indicator	Unit	ACT			Aust.		
		% change from			% change from		
		Latest figure	Previous period	Same period previous year	Latest figure	Previous period	Same period previous year
<b>BUILDING AND CONSTRUCTION</b> continued							
BUILDING COMMENCEMENTS, Mar qtr 99							
New houses	no.	285	3.3	11.8	22 409	-12.3	8.2
Value of houses commenced	\$m	38.6	8.7	33.6	2 741.9	-10.2	16.6
Value of non-residential building commenced	\$m	130.1	167.7	91.3	2 857.8	-15.0	6.5
Value of total commencements	\$m	213.0	82.8	97.2	7 450.0	-11.1	13.1
PRICE INDEXES							
Established house price index, Mar qtr 99		128.6	0.6	1.2	131.3	1.8	5.7
<b>ENGINEERING CONSTRUCTION (Mar qtr 99)</b>							
Private sector							
Value of work commenced	\$m	20.6	112.4	-17.3	2 858.7	-0.4	5.7
Value of work done	\$m	11.5	-22.8	-45.0	2 642.7	-10.9	-7.2
Value of work yet to be done	\$m	17.5	110.8	78.6	5 869.3	3.0	-11.0
Value of work done by public sector	\$m	29.4	38.0	27.3	1 681.4	0.5	9.3
<b>PRICES, WAGES AND CONSUMER SPENDING</b>							
CONSUMER PRICE INDEX, Jun qtr 99							
Food(a)		128.3	-0.5	1.1	127.8	0.2	3.8
Housing(a)		94.7	0.4	1.4	96.6	0.4	2.2
Transportation(a)		128.2	1.3	-0.7	122.9	1.4	0.1
All groups(a)		121.5	0.1	0.2	122.3	0.4	1.1
AVERAGE WEEKLY EARNINGS, Feb 99							
Original series							
Males	\$	807.5	-1.5	-1.9	727.0	0.6	1.6
Females	\$	589.9	-3.7	-3.5	480.5	0.9	2.2
Persons	\$	700.6	-2.8	-2.6	608.4	0.8	1.8
Trend series							
Males	\$	806.7	-1.8	-1.0	724.4	0.2	1.6
Females	\$	595.7	-1.7	-0.8	478.8	0.5	2.4
Persons	\$	704.1	-1.8	-0.8	606.0	0.2	1.8
WAGE COST INDEX, Mar qtr 99							
Public sector(b)		104.4	0.9	3.5	105.9	1.5	4.1
Private sector(b)		103.7	0.9	2.4	104.5	0.7	2.8
Total(b)		104.1	0.8	3.0	104.8	0.9	3.0
<b>RETAIL TURNOVER, Jun 99</b>							
Original series							
Food retailing	\$m	80.1	-4.0	3.6	4 629.3	-2.7	5.4
Department stores	\$m	19.8	-16.1	-2.5	894.6	-11.6	5.3
Hospitality and services	\$m	35.2	-7.4	-0.6	2 065.4	-3.6	13.6
All other retailing	\$m	84.8	-2.5	18.1	3 967.1	-0.1	8.5
Total	\$m	219.9	-5.2	7.4	11 556.4	-2.7	7.8
Trend series							
Food retailing	\$m	83.0	—	1.7	4 885.2	—	5.0
Department stores	\$m	22.2	-3.1	-9.4	1 008.4	-0.9	0.1
Hospitality and services	\$m	37.5	-0.3	5.6	2 206.2	0.9	13.6
All other retailing	\$m	90.7	1.3	16.0	4 143.4	0.3	7.6
Total	\$m	233.4	0.2	6.2	12 243.2	0.2	6.9

(a) Base year: 1989-90 = 100.0.

(b) Base of each index: September quarter 1997 = 100.0.

Indicator	Unit	ACT			Aust.		
		Latest figure	% change from		Latest figure	% change from	
			Previous period	Same period previous year		Previous period	Same period previous year
<b>TOURISM AND TRANSPORT</b>							
HOTELS, MOTELS AND GUEST HOUSE ACCOMMODATION, Mar qtr 99							
Original series							
Room nights	'000	241.1	-0.7	-0.7	9 585.8	-3.2	5.9
Takings at current prices	\$m	23.7	-2.9	-2.5	1 003.1	-3.8	5.0
Guest arrivals	'000	180.0	-7.7	-5.2	7 597.6	-4.7	4.1
Guest nights	'000	402.4	-4.1	-3.2	17 112.5	-2.5	6.6
Room occupancy rate	%	57.6	-2.2	-11.1	58.1	-2.2	0.2
NEW MOTOR VEHICLE REGISTRATIONS, Jun 99							
Motor vehicles	no.	1 402	25.2	-21.9	79 507	24.4	-9.7
Seasonally adjusted motor vehicles	no.	1 139	-3.7	-24.7	66 508	4.7	-10.6
Trend motor vehicles	no.	1 143	-1.0	-20.2	65 735	—	-4.3
<b>AGGREGATE INDICATORS</b>							
STATE ACCOUNTS, Mar qtr 99(a)							
Original series (chain volume measures)(b)							
Household final consumption expenditure	\$m	1 496	-9.3	4.5	82 954	-7.5	5.3
General government final consumption expenditure	\$m	2 334	-14.5	12.7	24 537	-10.0	4.2
Private gross fixed capital formation	\$m	246	-15.2	8.8	25 409	-11.1	-6.5
Public gross fixed capital formation	\$m	100	-11.5	-20.0	5 590	-8.9	78.9
State final demand	\$m	4 175	-12.7	8.4	140 702	-8.6	4.5
Gross state product	\$m	11 943	4.3	n.a	555 689	4.6	n.a
STATE ACCOUNTS, Mar qtr 99(a)							
Original series (at current prices)							
Household final consumption expenditure	\$m	1 540	-9.0	6.1	85 842	-7.0	7.0
General government final consumption expenditure	\$m	2 395	-15.0	14.3	25 502	-9.8	6.2
Private gross fixed capital formation	\$m	241	-16.6	7.6	26 059	-10.8	-5.5
Public gross fixed capital formation	\$m	105	-12.5	-16.7	5 760	-9.2	83.7
State final demand	\$m	4 281	-12.9	9.9	144 251	-7.5	5.7
Gross state product	\$m	12 111	5.8	n.a	563 517	6.1	n.a
PRIVATE NEW CAPITAL EXPENDITURE, Mar qtr 99							
Original series (at current prices)							
Buildings and structures	\$m	14	-51.7	27.3	3 097	-24.5	9.3
Equipment, plant and machinery	\$m	60	-28.6	114.3	7 425	-5.5	-0.6
Total	\$m	74	-34.5	89.7	10 522	-12.0	2.1
Trend series (at current prices)							
Buildings and structures	\$m	17	-29.2	-5.6	3 511	-5.8	4.8
Equipment, plant and machinery	\$m	80	11.1	135.3	8 068	1.7	-4.6
Total	\$m	98	2.1	88.5	11 579	-0.7	-1.9

(a) Quarterly state final demand details are released as a special data service (Cat. no. 5206.0.40.001).

(b) Reference year for chain volume measures is 1996-97.

Source: Australia Demographic Statistics (Cat. no. 3101.0); Australian National Accounts: State Accounts (Cat. no. 5242.0); Building Activity, Australia (Cat. no. 8752.0); Building Approvals, Australia (Cat. no. 8731.0); Consumer Price Index (Cat. no. 6401.0); Housing Finance for Owner Occupation, Australia (Cat. no. 5609.0); House Price Indexes: Eight Capital Cities (Cat. no. 6416.0); Industrial Disputes, Australia (Cat. no. 6321.0); Job Vacancies and Overtime, Australia (Cat. no. 6354.0); Labour Force, Australia, Preliminary (Cat. no. 6202.0); Labour Force, Australia (Cat. no. 6203.0); New Motor Vehicle Registration, Australia (Cat. no. 9301.0); Price Index of Materials Used in Housing Building (Cat. no. 6408.0); Private New Capital Expenditure, State Estimates (Cat. no. 5646.0); Retail Trade, Australia (Cat. no. 8501.0); Tourism Accommodation, ACT (Cat. no. 8635.8); Tourism Indicators, Australia (Cat. no. 8634.0).

Indicator	Unit	Latest period	NSW	Vic.	Qld	SA	WA	Tas.	NT	ACT	Aust.
<b>POPULATION</b>	'000	Dec qtr 98	6 384.3	4 689.8	3 485.2	1 490.4	1 847.8	471.1	191.4	308.7	18 871.8
<b>LABOUR FORCE</b> (trend)											
Employed persons	'000	Jul 99	2 934.0	2 187.9	1 644.0	661.8	901.0	196.5	92.3	159.3	8 771.1
Unemployment rate	%	Jul 99	6.3	7.6	8.1	8.1	6.5	9.4	4.3	5.7	7.2
<b>WAGE AND SALARY EARNERS</b> (trend)											
Public sector	'000	Feb qtr 99	468.2	305.4	285.8	113.1	145.8	41.5	21.8	65.8	1 447.0
Private sector	'000	Feb qtr 99	2 021.2	1 504.7	977.3	407.3	576.5	114.9	49.7	78.9	5 730.5
Total public and private sector	'000	Feb qtr 99	2 489.3	1 810.1	1 263.1	520.4	722.3	156.3	71.5	144.7	7 177.5
<b>STATE ACCOUNTS(a)</b> (original)											
Gross state product (chain volume measures)	\$m	1997-98	196 676	141 219	90 188	38 092	60 695	11 095	5 779	11 943	555 689
Gross state product (current prices)	\$m	1997-98	199 448	143 209	91 459	38 629	61 550	11 251	5 860	12 111	563 517
<b>PRIVATE NEW CAPITAL EXPENDITURE</b> (trend)	\$m	Mar qtr 98	3 756	2 921	2 159	563	1 657	116	443	98	11 579
<b>BUILDING APPROVALS</b>											
Dwelling units approved (original)	no.	Jun 99	4 614	3 312	2 587	845	2 386	88	180	142	14 154
Dwelling units approved (trend)	no.	Jun 99	4 361	3 442	2 305	702	1 906	105	158	154	13 134
Value of non-residential building approved (original)	\$m	Jun 99	503.7	183.2	157.2	26.5	60.9	7.3	7.2	2.5	948.6
Value of all buildings approved (original)	\$m	Jun 99	1 171.2	679.8	463.0	115.3	327.0	19.7	32.6	22.4	2 831.1
<b>ENGINEERING CONSTRUCTION</b>											
Value of engineering construction work done	\$m	Mar qtr 99	1 289.4	865.4	1 078.8	218.8	695.8	62.7	72.3	41.0	4 324.1
<b>AVERAGE WEEKLY EARNINGS</b> (trend)											
Full-time adult ordinary time	\$	Feb 99	783.0	732.1	698.7	702.9	743.4	700.7	751.8	842.1	745.0
<b>RETAIL TRADE</b> (trend)											
Retail turnover	\$m	Jun 99	4 249.4	2 983.9	2 290.4	874.2	1 193.4	275.3	134.9	233.4	12 243.2
<b>HOTELS, MOTELS &amp; GUEST HOUSE ACCOMMODATION</b>											
Room nights occupied	'000	Mar qtr 99	3 213.2	1 680.8	2 489.4	524.8	878.9	327.8	229.8	241.1	9 585.8
Room occupancy rate	%	Mar qtr 99	60.6	62.0	54.9	58.0	55.8	66.1	42.2	57.6	58.4
<b>NEW MOTOR VEHICLE REGISTRATIONS</b> (trend)	no.	Jun 99	22 750	17 686	11 198	4 122	6 906	1 229	701	1 143	65 735
	Unit	Latest period	Syd.	Melb.	Bris.	Adel.	Perth	Hob.	Dar.	Canb.	Aust.
<b>CONSUMER PRICE INDEX</b>											
Food(d)		Jun qtr 99	128.7	126.7	126.3	128.8	129.6	126.8	126.7	128.3	127.8
Housing(d)		Jun qtr 99	104.3	87.5	102.0	92.8	91.3	95.9	116.9	94.7	96.6
Transportation(d)		Jun qtr 99	124.2	121.6	121.8	122.4	123.2	120.4	119.3	128.2	122.9
All Groups(d)		Jun qtr 99	123.0	121.5	123.1	123.6	120.8	122.5	122.7	121.5	122.3
Average retail prices (cents)											
Milk carton, supermarket sales	1 litre	Jun qtr 99	122	140	126	136	141	130	135	115	n.a.
Bread, white loaf, sliced, supermarket sales	680 g	Jun qtr 99	211	233	200	163	203	203	220	212	n.a.
Beef, rump steak	1 kg	Jun qtr 99	1 249	1 090	1 033	1 201	1 138	1 081	1 207	1 214	n.a.
Chicken, frozen	1 kg	Jun qtr 99	353	354	348	353	362	387	427	336	n.a.
Potatoes	1 kg	Jun qtr 99	130	155	136	81	137	82	159	142	n.a.
Coffee, instant (jar)	150 g	Jun qtr 99	655	592	633	586	615	636	564	520	n.a.
Scotch nip, public bar	30 ml	Jun qtr 99	331	321	271	363	387	264	333	273	n.a.
Private motoring petrol											
Leaded	1 litre	Jun qtr 99	72.6	70.2	63.3	71.2	73.0	77.9	78.7	74.6	n.a.
Unleaded	1 litre	Jun qtr 99	70.1	67.8	60.9	68.8	70.7	75.9	76.7	72.3	n.a.

(a) State estimates are not comparable to national estimates from the June quarter 1995 due to revised methodology used in *Australian National Accounts, State Accounts* (Cat. no. 5242.0).

(b) Experimental series. Users are cautioned these estimates are derived indirectly by calculating a deflator from the expenditure components of the state series concerned. Therefore, in general, the sum of the state estimates does not equal the estimates for Australia.

(c) Reference year for chain volume measures is 1996-97.

(d) Base year: 1989-90 = 100.0.

Indicator	Latest period	NSW	Vic.	Qld	SA	WA	Tas.	NT	ACT	Aust.
<b>POPULATION</b>	Dec qtr 98	0.3	0.3	0.4	0.1	0.4	-0.1	0.3	—	0.3
<b>LABOUR FORCE</b> (trend)										
Employed persons	Jul 99	0.3	0.3	—	0.2	0.2	0.3	-1.2	0.4	0.2
Unemployment rate	Jul 99	-0.2	-0.1	—	-0.2	-0.1	-0.3	—	-0.1	—
<b>WAGE AND SALARY EARNERS</b> (trend)										
Pubic sector	Feb qtr 99	0.8	0.1	0.6	-0.8	1.1	0.7	-1.8	-1.2	0.3
Private sector	Feb qtr 99	1.4	2.7	—	—	1.7	1.1	3.8	5.6	1.5
Total public and private sector	Feb qtr 99	1.3	2.3	0.1	-0.2	1.6	0.9	2.0	2.4	1.3
<b>STATE ACCOUNTS(a)</b> (original)										
Gross state product (chain volume measures)(b)(c)	Mar qtr 99	4.6	3.8	4.9	4.6	6.5	4.0	5.1	4.3	4.6
Gross state product (current prices)	Mar qtr 99	6.0	5.3	6.4	6.1	8.0	5.5	6.5	5.8	6.1
<b>PRIVATE NEW CAPITAL EXPENDITURE</b> (trend)										
Total (at current prices)	Dec qtr 98	1.5	1.2	8.6	-6.2	-10.5	-3.3	-4.9	2.1	-0.7
<b>BUILDING APPROVALS</b>										
Dwelling units approved (original)	Apr 99	-3.0	-8.3	15.2	23.7	22.9	-7.4	45.2	-22.4	3.8
Dwelling units approved (trend)	Apr 99	1.0	-0.9	-0.3	2.3	3.3	-3.7	1.3	-5.5	0.8
Value of non-residential building approved (original)	Apr 99	18.7	-24.2	2.9	-50.3	-0.5	-27.7	71.4	-90.4	-2.6
Value of all buildings approved (original)	Apr 99	2.6	-10.0	9.7	-14.1	15.7	-7.5	45.5	-61.5	-0.2
<b>ENGINEERING CONSTRUCTION</b>										
Value of engineering construction work done	Mar qtr 99	-8.8	2.6	-4.8	-10.6	-14.6	11.2	-26.1	13.3	-6.8
<b>AVERAGE WEEKLY EARNINGS</b> (trend)										
Full-time adult ordinary time	Feb 99	1.5	—	0.2	0.5	-0.4	0.4	0.3	-0.8	0.6
<b>RETAIL TRADE</b> (trend)										
Retail turnover	Jun 99	0.1	0.7	—	-0.6	-0.3	-0.2	0.7	0.2	0.2
<b>HOTELS, MOTELS &amp; GUEST HOUSE ACCOMMODATION</b>										
Room nights occupied	Mar qtr 99	0.1	4.9	-10.9	-6.7	-3.9	15.1	-21.6	-0.7	-3.2
Room occupancy rate	Mar qtr 99	0.8	3.3	-5.7	-2.8	-1.9	9.9	-10.6	-1.3	-1.0
<b>NEW MOTOR VEHICLE REGISTRATIONS</b> (trend)	Jun 99	0.5	0.1	-1.5	-0.5	1.4	-1.5	-3.3	-1.0	—
	Latest period	Syd.	Melb.	Bris.	Adel.	Perth	Hob.	Dar.	Canb.	Aust.
<b>CONSUMER PRICE INDEX</b>										
Food(d)	Jun qtr 99	-0.3	0.7	-0.1	0.6	0.9	1.0	120.6	-0.5	0.2
Housing(d)	Jun qtr 99	0.5	0.2	0.4	0.7	0.8	0.1	0.8	0.4	0.4
Transportation(d)	Jun qtr 99	1.4	1.4	1.1	1.2	1.7	1.7	0.2	1.3	1.4
All Groups(d)	Jun qtr 99	0.3	0.4	0.2	0.7	0.8	0.3	0.5	0.1	0.4
Average retail prices (cents)										
Milk carton, supermarket sales	Jun qtr 99	—	0.7	5.9	—	—	—	3.8	—	n.a.
Bread, white loaf, sliced, supermarket sales	Jun qtr 99	-2.8	9.9	4.2	1.2	-2.4	—	1.4	1.0	n.a.
Beef, rump steak	Jun qtr 99	5.8	2.9	-3.1	0.7	4.3	8.0	1.4	6.3	n.a.
Chicken, frozen	Jun qtr 99	-4.3	-0.8	8.1	-3.3	3.4	2.4	12.1	-6.9	n.a.
Potatoes	Jun qtr 99	0.8	4.0	9.7	-1.2	-0.7	-7.9	6.7	-2.7	n.a.
Coffee, instant (jar)	Jun qtr 99	4.5	-6.6	8.4	5.4	-4.4	8.2	-4.2	-2.8	n.a.
Scotch nip, public bar	Jun qtr 99	0.6	0.9	0.7	1.4	-0.5	—	0.9	—	n.a.
Private motoring petrol										
Leaded	Jun qtr 99	5.7	5.1	5.1	4.2	6.0	5.1	4.0	3.6	n.a.
Unleaded	Jun qtr 99	5.6	5.0	5.2	4.4	6.0	5.3	4.1	3.7	n.a.

(a) State estimates are not comparable to national estimates from the June quarter 1995 due to revised methodology used in *Australian National Accounts, State Accounts* (Cat. no. 5242.0).

(b) Experimental series. Users are cautioned these estimates are derived indirectly by calculating a deflator from the expenditure components of the state series concerned. Therefore, in general, the sum of the state estimates does not equal the estimates for Australia.

(c) Reference year for chain volume measures is 1996-97.

(d) Base year: 1989-90 = 100.0.



## SELF-HELP ACCESS TO STATISTICS

- CPI INFOLINE* For current and historical Consumer Price Index data, call 1902 981 074 (call cost 75c per minute).
- DIAL-A-STATISTIC* For the latest figures for National Accounts, Balance of Payments, Labour Force, Average Weekly Earnings, Estimated Resident Population and the Consumer Price Index call 1900 986 400 (call cost 75c per minute).
- INTERNET* [www.abs.gov.au](http://www.abs.gov.au)
- LIBRARY* A range of ABS publications is available from public and tertiary libraries Australia-wide. Contact your nearest library to determine whether it has the ABS statistics you require.

## WHY NOT SUBSCRIBE?

- PHONE* +61 1300 366 323
- FAX* +61 03 9615 7848

## CONSULTANCY SERVICES

ABS offers consultancy services on a user pays basis to help you access published and unpublished data. Data that is already published and can be provided within 5 minutes is free of charge. Statistical methodological services are also available. Please contact:

<i>INQUIRIES</i>	<i>City</i>	<i>By phone</i>	<i>By fax</i>
	Canberra	02 6252 6627	02 6207 0282
	Sydney	02 9268 4611	02 9268 4668
	Melbourne	03 9615 7755	03 9615 7798
	Brisbane	07 3222 6351	07 3222 6283
	Perth	08 9360 5140	08 9360 5955
	Adelaide	08 8237 7400	08 8237 7566
	Hobart	03 6222 5800	03 6222 5995
	Darwin	08 8943 2111	08 8981 1218

*POST* Client Services, ABS, PO Box 10, Belconnen ACT 2616

*EMAIL* [client.services@abs.gov.au](mailto:client.services@abs.gov.au)



2130380008995  
ISSN 1320-808X

RRP \$15.50

© Commonwealth of Australia 1999

Produced by the Australian Bureau of Statistics